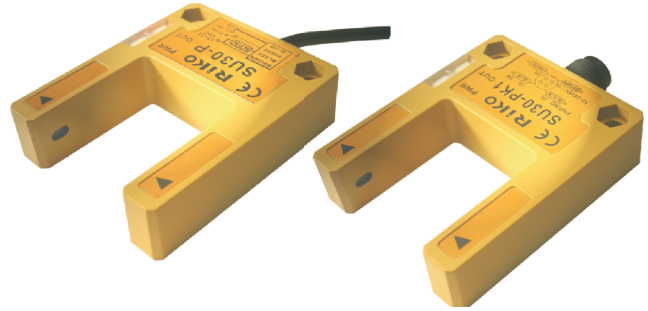


◆ Characteristic:

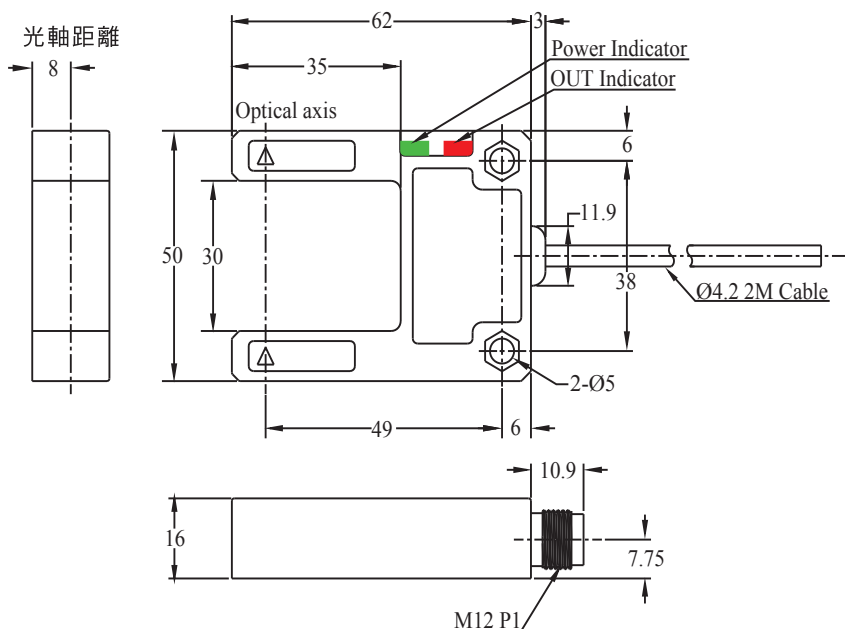
- Wide sensing range : 30mm.
- Two indicators (power/sensing). Easy to recognize.
- NP model : NPN+PNP L.on/D.on 4-in-1 outputs.



◆ Specifications:

Model	NPN L.on/D.on	SU30-N	SU30-NK1
	PNP L.on/D.on	SU30-P	SU30-PK1
	NPN L.on/D.on PNP L.on/D.on	SU30-KP2	SU30-KP2K1
Sensing distance	30 mm		
Min. detection object	Opaque (Ø1.0 x 10.0mm)		
Emitting light	Infrared LED 940 nm		
Operating voltage	DC12 ~ 24 V		
Current Consumption	20 mA Max.		
Load current	100mA Max. at DC24V		
Response time	1 ms Max.		
Ambient illumination	Incandescent light : 3,000 lux max.		
Insulation resistance	20MΩ min. (DC500V)		
Voltage withstandability	AC500V 60Hz for 60 Sec.		
Operating temperature	-20°C ~ + 60°C		
Ambient humidity	35% ~ 85% RH		
Protection degree	IP64		
Vibration resistance	1.5 mm peak to peak amplitude, 10 to 55 Hz, 2 hours in X,Y and z directions		
Shock resistance	50 G repeated 10 times each in X,Y and Z directions		
Material	PC		
Wiring method	SU30-□	Pre-wired Ø4.2 x 2 M / 4-wires	
	SU30-□K1	M12 pigtailed type / M12 ヘッド	
Weight	SU30-□	Approx.86g	
	SU30-□K1	Approx.26g	

◆ Dimensions: (unit:mm)



◆ Wiring diagrams:

