

◆ Characteristic :

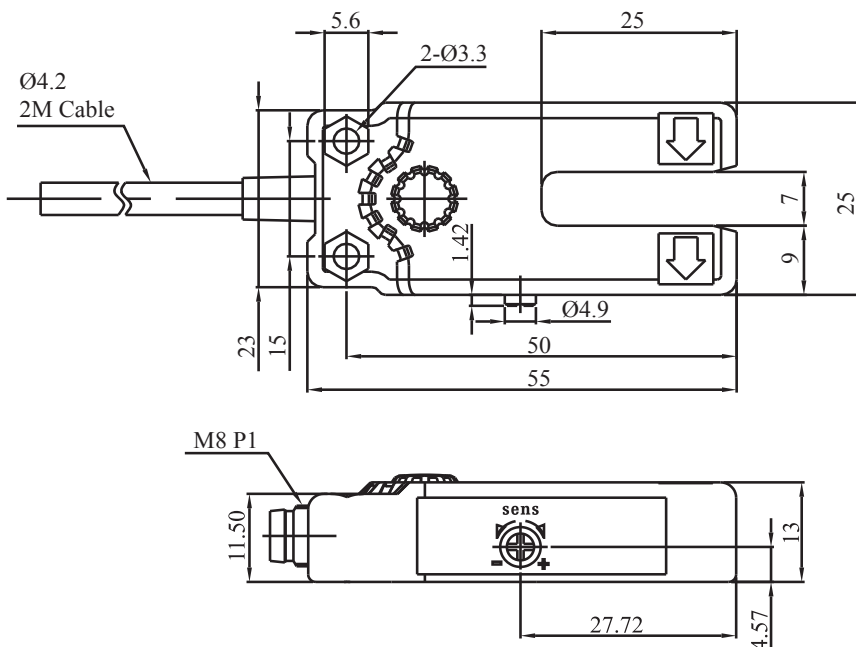
- Sensing distance 7mm.
- Bright LED output indicator.
- Sensitivity adjustment 12-turn potentiometer (VR).
- Visible red light detection application : Address reading and cut mark sensing.



◆ Specifications :

Model	NPN D.on	SU07-N	SU07-ND1
	PNP D.on	SU07-P	SU07-PD1
	NPN L.on/D.on PNP L.on/D.on	SU07-NP	SU07-NPB1
Sensing distance	7 mm		
Min. detection object	Opaque(Ø0.5 x 10.0mm)		
Emitting light	Red LED 660 nm		
Operating voltage	DC12 ~ 24 V		
Current Consumption	18 mA Max.		
Load current	100mA Max. at DC24V		
Response time	1 ms Max.		
Ambient illumination	Incandescent light : 1,000 lux max.		
Insulation resistance	20MΩ min. (DC500V)		
Voltage withstandability	AC500V 60Hz for 60 Sec.		
Operating temperature	-10°C ~ + 55°C		
Ambient humidity	35% ~ 85% RH		
Protection degree	IP64		
Vibration resistance	1.5 mm peak to peak amplitude, 10 to 55 Hz, 2 hours in X,Y and z directions		
Shock resistance	50 G repeated 10 times each in X,Y and Z directions		
Material /	PC		
Wiring method	N/P : Pre-wired Ø4.2 x 2 M / 3-wires NP : Pre-wired Ø4.2 x 2 M / 4-wires		M8 connector / M8
Weight	Approx.65g		Approx.25g

◆ Dimensions (unit:mm)



◆ Wiring diagrams :

